

Owner Instructions



Warning!
Read instructions before using the machine

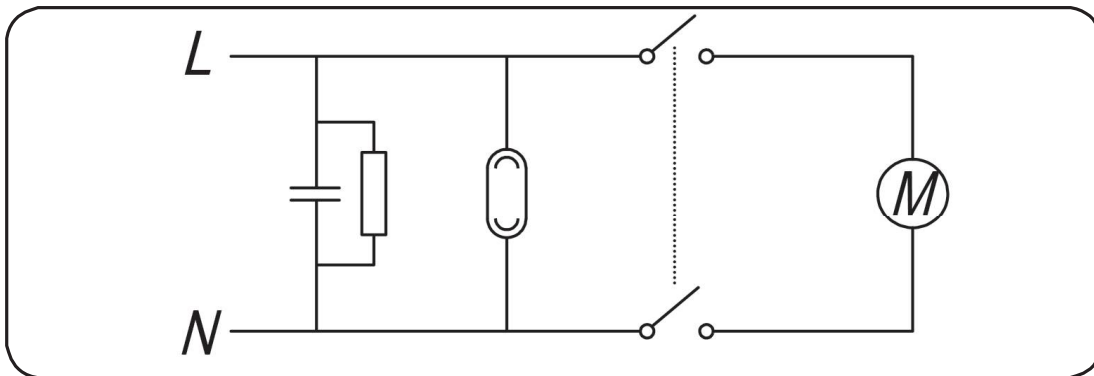
PSP180



Kit AH-0



Schematic Diagram

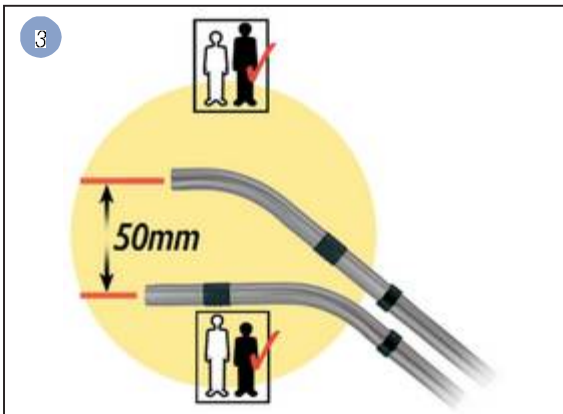


Data

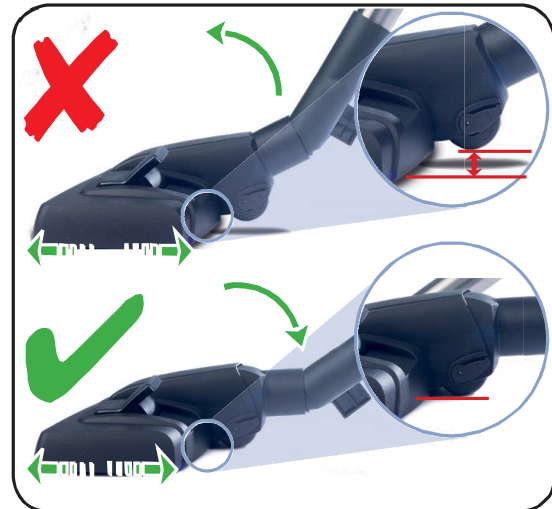
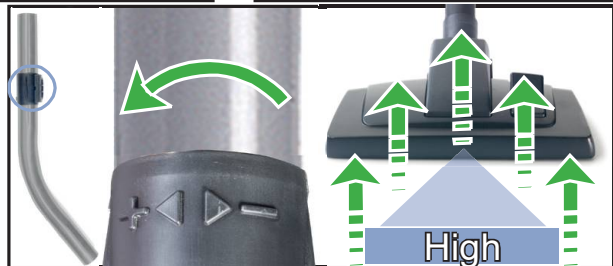
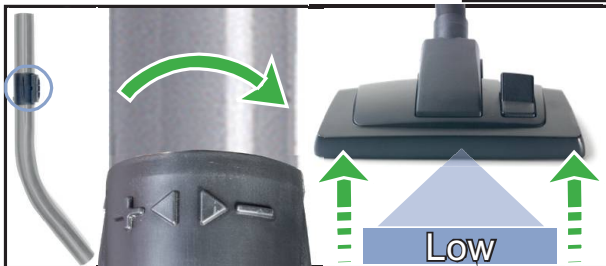
| Drum Size | Cleaning Range | Weight (Ready to work) | Sound Pressure |
|------------------|----------------|--------------------------------|------------------------------|
| 8 L | 26.4 m | 7 kg | 64 dB (A) Uncertainty 0.5 dB |
| Protection Class | | Size | |
| Class II | | 340 x 365 x 360 mm (W x L x H) | |

Replacement Parts

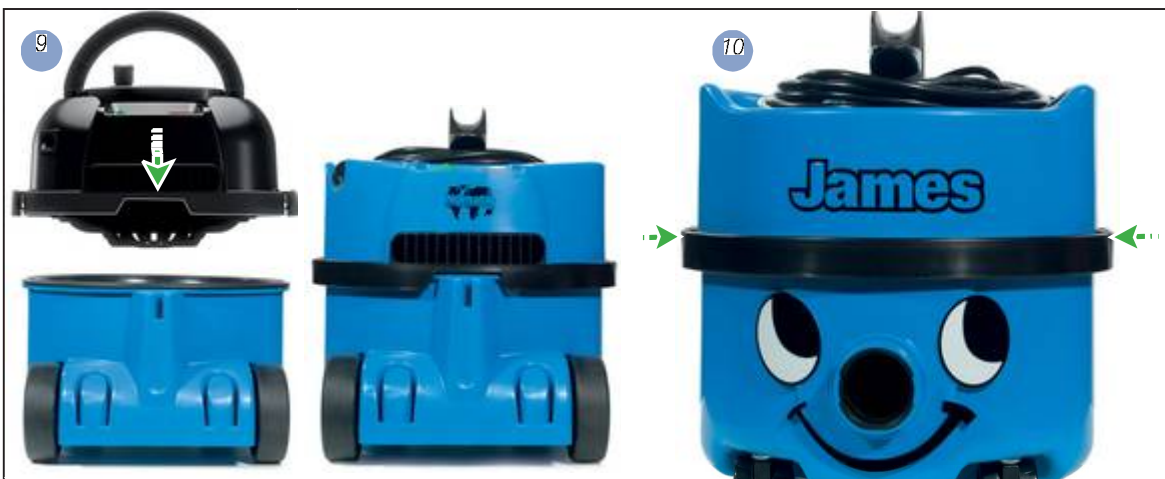
| TriTex Filter | |
|-------------------|----------------------|
| 604165 | TriTex Filter |
| HepaFlo Dust Bags | |
| 909291 | NVM 1CH (Pack of 3) |
| 907076 | NVM 1CH (Pack of 5) |
| 907075 | NVM 1CH (Pack of 10) |



Using your machine



Cleaning the machine



Fitting the face



Wand docking



Tool tidy

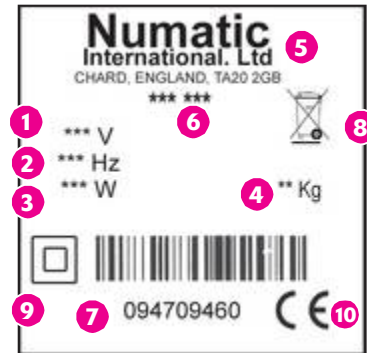


Changing the cable



About your machine

- 1 Voltage
- 2 Frequency
- 3 Rated Input Power
- 4 Weight (ready to work)
- 5 Company Name & Address
- 6 Model
- 7 Machine yr/wk Serial number
- 8 WEEE Logo
- 9 Protection Class 2 Symbol
- 10 CE Mark



PPE (personal protective equipment) That may be required for certain operations.



NOTE: A risk assessment should be conducted to determine which PPE should be worn.

Safety Critical Components

Mains leads: HO5VV-F 10 x 2 x 1.00 mm²

WEEE Legislation

(Waste, Electrical and Electronic Equipment)

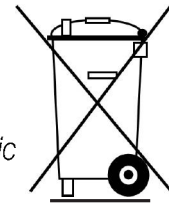
Vacuum cleaner, accessories and packaging should be sorted for environmentally - friendly recycling.

(Only for EU Countries)

Do not dispose of vacuum cleaner into household waste!

According to the European Directive 2012/19/EU on waste electrical and electronic equipment and its incorporation into national law.

Vacuum cleaners that are no longer suitable for use must be separately collected and sent for recovery in an environmentally - friendly manner.



Failure to rectify the problem or in the event of a breakdown contact your Numatic dealer or the Numatic Technical helpline +44 (0)1460 269268.

Daily

Keep the machine clean, including hoses and tubes.

Ensure the bag and filter are fitted.

Regularly examine the power cord.

Check dust bag frequently.

Check filters are clean.

Weekly - as daily and:-

Check for any worn or damaged parts and replace immediately.

Do not steam clean or pressure wash.

Information for dry use vacuum cleaners



WARNING

Ensure you read the instruction manual before using the machine.

Operators shall be adequately instructed on the use of these machines, as with all electrical equipment, care and attention must be exercised at all times during use, you must also make certain that routine and preventative maintenance is carried out periodically to ensure safe operation.

Failure to carry out maintenance as necessary, including the replacement of parts to the correct standard could render this equipment unsafe and the manufacturer can accept no responsibility in this respect.

This machine is for DRY USE only

You must disconnect the machine from the mains by removing the plug from the supply socket BEFORE cleaning or maintenance and when replacing parts or converting the machine to another function.

This appliance is intended to be assembled, cleaned and maintained by an adult.

This machine is not suitable for the collection of biological hazards, hazardous or explosive dusts. Contact your local distributor if you require a machine capable of performing these tasks.

This machine is not a toy; children shall not play with this machine.

The machine must not be used by persons with reduced physical, sensory or mental capabilities, or lack of experience or knowledge, unless they have been given supervision or instruction.

You must not allow the supply cord to come into contact with rotating brushes (if fitted).

Only use the socket outlet on the machine for purposes specified in the instructions (where fitted).



CAUTION

This machine must not be stored outside, or used in wet environments, or to collect wet materials.

The vacuum cleaner should be stored in a dry place and is for indoor use only.

You must ensure that the filtration system fitted to the machine is suitable for the material being collected.

NOTES

This product complies with the requirements of IEC/EN 60335-2-69 2012.

The primary use for this machine is commercial, for example in hotels, schools, hospitals, factories, shops and offices.

If the vacuum cleaner stops working, remove the plug from the wall before investigating where the fault lies.

If the vacuum cleaner has a blockage, switch off, remove the plug from the socket outlet, and inspect the floor tool, wands and hose for debris. If the floor tool, wands and hose are clear, replace the dust bag and clean the filter.

The vacuum cleaner should be inspected after use for damage.

The power light will illuminate, when your machine is connected to a suitable power supply (where fitted).



DO

- Keep your machine clean.
- Keep filters clean.
- Use filter bags, they will enhance performance and help keep machine clean.
- Use a Numatic original filter bag under fine dust conditions.
- Keep hoses and tubes clear.
- Replace any worn or damaged parts immediately.
- Regularly examine the power cord. If damage is found such as cracking or ageing the power cord must be replaced by a competent person using the correct Numatic original part.
- Change dust bag frequently.
- Keep diffuser filter (where fitted) clean.
- Only use the brushes provided with the machine. The use of other brushes may impair safety.



DON'T

- Unreel the cable with one pull or pull on the cable to unplug the machine from the power supply.
- Use to suck up hot ashes or lighted cigarette ends.
- Use steam cleaners, pressure washers or immerse in water to clean the machine.
- Attempt machine maintenance or cleaning unless the power supply plug has been removed from the supply outlet.
- Use in a wet environment or to collect wet materials.
- Store your machine in wet conditions.



EU DECLARATION OF CONFORMITY

We hereby declare under our sole responsibility that the following equipment fulfils all the relevant provisions of the following EU Directives

Machinery Directive 2006/42/EC

EMC Directive 2014/30/EU

RoHS Directive 2011/65/EU

Energy Labelling of vacuum cleaners EU/665/2013 – 2010/30/EU

Eco design requirements for vacuum cleaners EU/666/2013 – 2009/125/EC

Machine Description: Vacuum Cleaner

Machine Type: JVP, NSP, PSP, VHN, VNH, VNP, JNP, NVP, NVH, NSH, JVH, PSH, JNH, NUV, NPH, JDS.

Relevant standards upon which conformity is declared include:

EN 60335-1: 2012 + AC:2014 + A11:2014

EN 60335-2-69: 2012

EN 55014-1: 2006 + A1:2009 + A2:2011

EN 55014-2: 1997 + A1:2001 + A2:2008

EN 61000-3-2: 2014

EN 61000-3-3: 2013

EN 62233: 2008

A technical construction file for this equipment is retained at the manufacturer's address under the authorisation of the following signatory:

Name: [Signature] Position: Development Manager

Signed

Date

24/4/18

Numatic
INTERNATIONAL

Numatic International Ltd
Chard Somerset
TA20 2GB
www.numatic.co.uk

GB



| | |
|--|-----------|
| Model ID | PSP 180 |
| Vacuum Cleaners - EU Data Sheet In accordance with (EU) Regulation No 665/2013 Numatic International | |
| Energy efficiency class | A |
| Annual energy consumption in kWh per annum Indicative annual energy consumption (kWh per year), based on 50 cleaning tasks. Actual annual energy consumption will depend on how the appliance is used. | 27.9 |
| Cleaning performance on carpet | D |
| Cleaning performance on hard floor | C |
| Dust re-emission | C |
| Sound power level | db (A) 72 |
| Rated input power | W 620 |

Distributed by:-

NACECARE
 1205 Britannia Road East
 Mississauga Ontario L4W 1C7
 Canada
 Telephone: (800) 387 3210
 Fax: (800) 709 2896
<http://www.nacecare.com>

Numatic International Limited, Chard, Somerset, TA20 2GB
 Telephone: 01460 68600
 Fax: 01460 68458

UNITED KINGDOM: www.numatic.co.uk
 FRANCE: www.numatic.fr

GERMANY: www.numatic.de
 NETHERLANDS: www.numatic.nl

SWITZERLAND: www.numatic.ch
 SOUTH AFRICA: www.numatic.co.za

Specification subject to change without prior notice

www.numatic.com © Numatic International Limited